



ONE BALE SPREAD
WITHIN ONE MINUTE
WITH MINIMAL DUST



2026



World Class Bale Handling Solutions
Improving your farm's efficiency
www.spread-a-bale.com





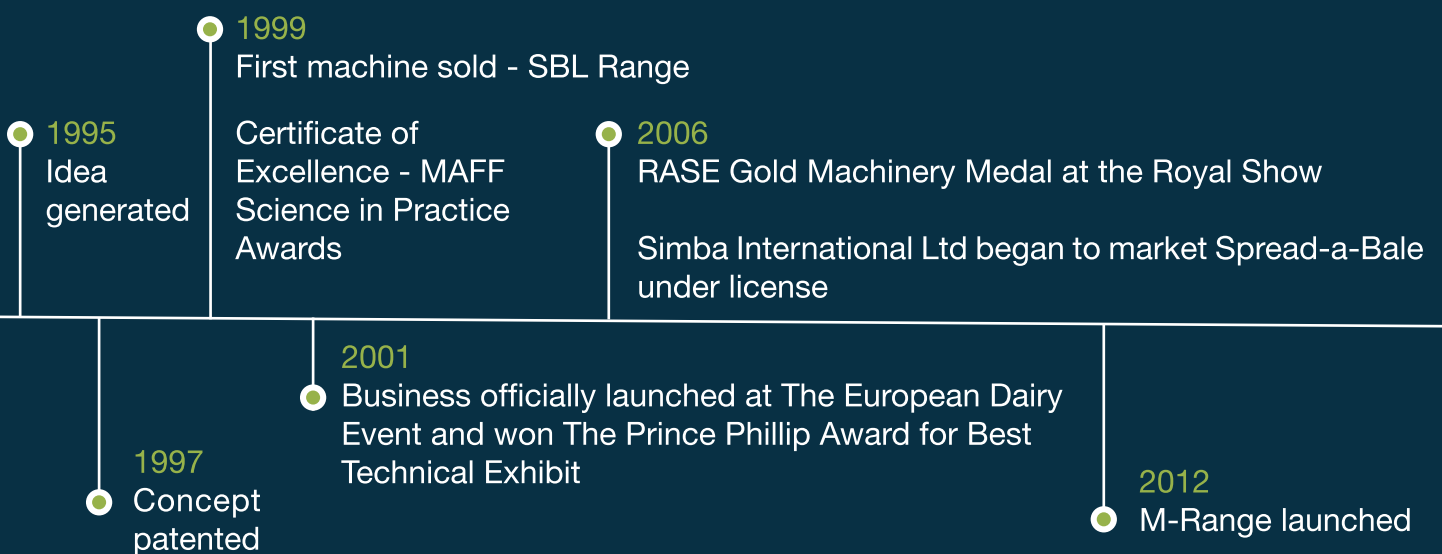
“As we celebrate 25 years of Spread-a-Bale, I’m incredibly proud of how far we’ve come—from an idea on my Cheshire dairy farm to a product trusted by customers around the world.

Spread-a-Bale started with a simple aim: to take the hard graft out of manually spreading straw and help people work more efficiently. Since those early days, we’ve continued to listen, improve and evolve—developing a range of machines that can be configured to suit farms and businesses of all sizes, across many different sectors, and increasingly beyond agriculture too.

I’m grateful to everyone who has been part of this journey: our brilliant team, our dealers and distributors, our research partners, and above all the customers who rely on Spread-a-Bale every day.

Thank you for being part of the story so far—I’m excited for what comes next.”

- Michael Hughes, Inventor & Managing Director





World Class

Spread-a-Bale®

Bale Handling Solutions

Spread-a-Bale®

Feed-a-Bale

Re-Bale

5 Configure your Spread-a-Bale

7 Spreading Heads

8 Choice of Bodies

10 Optional Extras

12 Mega Machine

13 Dust Trial Data

14 Avian Deflector

15 Brackets

16 Testimonials

26 Specification Table

20 Introduction to Feed-a-Bale

21 Feed-a-Bale Hood
Mulching Hood

22 Combi-Bale

24 Re-Bale Unit

2017
Marketing brought in-house

2020
Manufacturing brought in-house

2024
LAMMA Livestock Gold Award and
Royal Highland Showcase Commendation awarded to ST

2026
LAMMA Machine of the Year Bronze Award presented
to Combi-Bale

2025
New manufacturing facility opened

Royal Welsh Show Gwobr Bevington Gibbons Trophy
Best Reserve Tradestand in the Agricultural Sector 2025

2021
Royal Highland Showcase Commendation
for Technical Innovation awarded to HD Motors



World Class Bale Handling Solutions

Providing livestock farmers with a unique, efficient solution to one of the most labourious daily tasks - spreading bedding straw.

Spread-a-Bale is designed for versatility, whether you operate a skidsteer, tractor loader or telehandler. The system self-loads bales directly from the stack or floor, handling both round and square bales with ease. Once attached—an extremely quick and simple process—it enables effortless bedding, distributing a full bale in less than one minute while requiring only 55 litres/minute oil flow. With no electrics, very low maintenance, and minimal running costs, it delivers reliable performance day after day.

Because Spread-a-Bale does not chop or blow, it generates minimal dust, improving animal and operator comfort. Our machines can spread up to 15 metres / 49 foot, allowing safe bedding from outside the pen whilst maintaining straw integrity – helping straw to go further! Compared with manual spreading, it can deliver savings of up to 75% in labour and up to 50% in straw. Against turbine-based straw processors, it reduces loading and spreading time by 50%, uses 75% less fuel, and produces 20% longer straw for a deeper, more comfortable bed.

With a proven design and more than 5,000 machines operating globally, Spread-a-Bale continues to improve health and safety while helping farms reduce their overall carbon footprint.



CONFIGURE YOUR SPREAD-A-BALE

1

Choose
Your
Head

2

Choose
Your
Body

3

Choose
Your
Extras

- ✓ Spreads both round and rectangular bales
- ✓ Only one loader required
- ✓ 75% reduced fuel usage
- ✓ Saves up to 75% labour and up to 50% straw
- ✓ 20% longer straw for a deeper, fluffier bed
- ✓ Quick and simple to attach/detach



MINIMAL DUST SPREADING

1

Choose
Your
Head

2

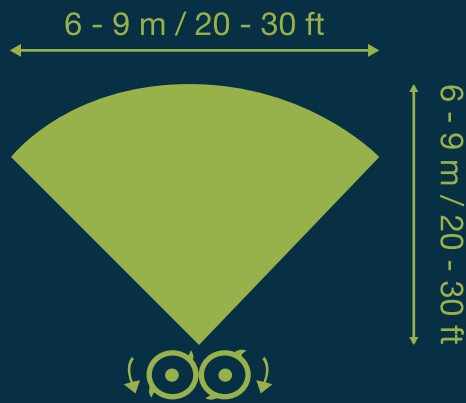
Choose
Your
Body

3

Choose
Your
Extras

2VR

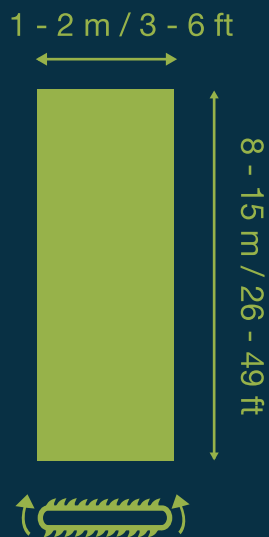
Twin Vertical Rotor



EU Patent 2804465

HR

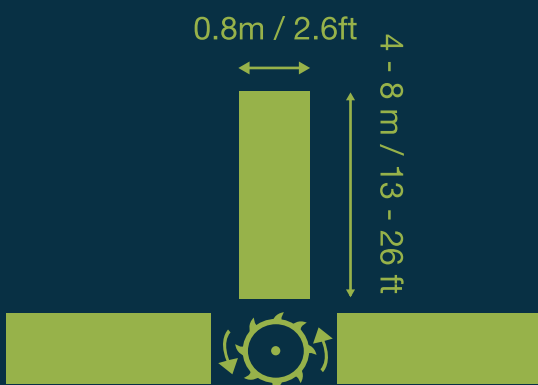
Horizontal Rotor



PCT Patents Applied For

ST

Side Throw



PCT Patents Applied For

Ideal for narrow passageways

LITE-RANGE

NEW

Designed for 1 to 1.5 tonne tractor loaders, Skid Steers and Hoff loaders.

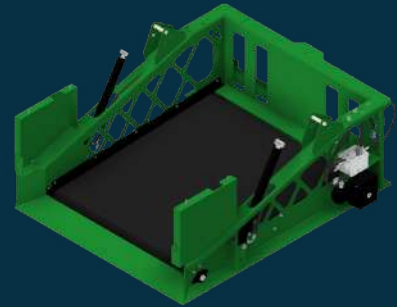
MICRO-LITE

Compatible with bale sizes up to:

5ft

5 x 4 x 3ft

1.5 x 1.2 x 1M



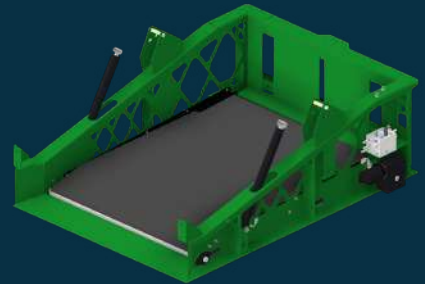
MINI-LITE

Compatible with bale sizes up to:

5.5ft

6 x 4 x 3ft

1.8 x 1.2 x 1M



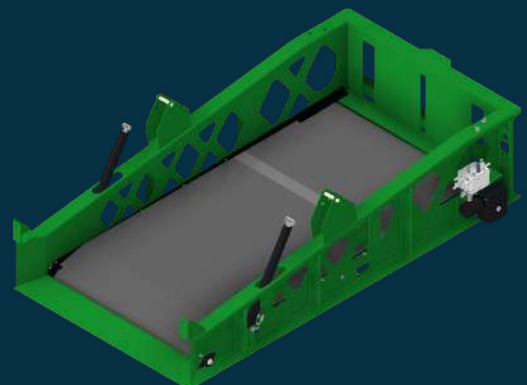
MIDI-LITE

Compatible with bale sizes up to:

5.5ft

8 x 4 x 3ft

2.4 x 1.2 x 1M



1

Choose
Your
Head

2

Choose
Your
Body

3

Choose
Your
Extras

M-RANGE

Our traditional range designed for 1.7 to 3 tonne telescopic and industrial loaders.

MINI

Compatible with bale sizes up to:

5.5ft



6 x 4 x 3ft
1.8 x 1.2 x 1M



AVAILABLE AS SUPER MINI (*increased head height*)

MIDI

Compatible with bale sizes up to:

5.5ft



8 x 4 x 3ft
2.5 x 1.2 x 1M



AVAILABLE IN XL (*extra 30cm / 1ft length*)

INCREASED HEAD HEIGHT (*extra 1ft height*)

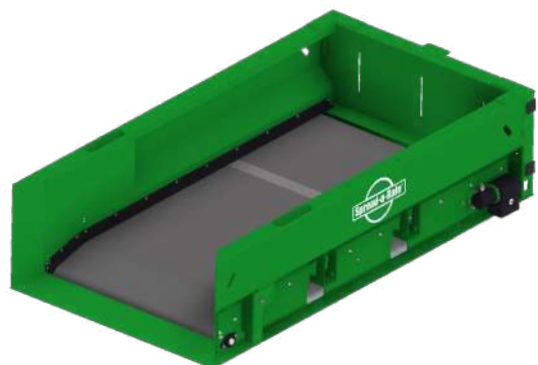
MAXI

Compatible with bale sizes up to:

6ft



8 x 4 x 4ft
2.5 x 1.2 x 1.3M



AVAILABLE IN XL (*extra 30cm / 1ft length*)

LITE-RANGE

NEW

When space is tight or you need to drive down a passageway, the optional Lite **Side-Mounting Kit** allows you to spread to the side for easy, controlled coverage.



Suitable for small loaders - new side frame weighs only 142kg



Increased flexibility and ease of spreading across all building configurations

1

Choose
Your
Head

2

Choose
Your
Body

3

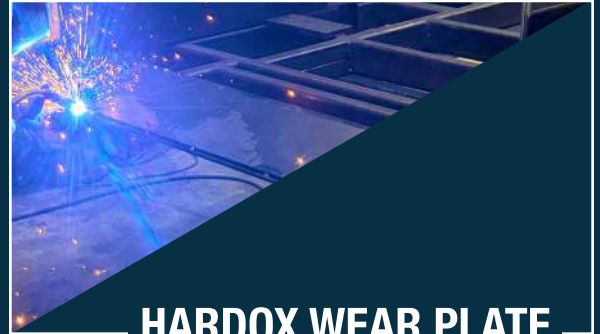
Choose
Your
Extras

M-RANGE

Our M-Range offers an extended range of optional extras as follows:



GALVANISED



HARDOX WEAR PLATE



19% increase in torque

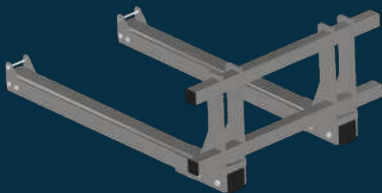
HD MOTORS



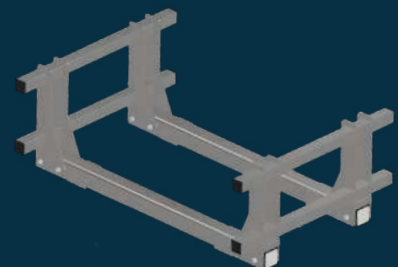
27% increase in performance and efficiency

HIGH FLOW MANIFOLD

Combining HD Motors with a High Flow Manifold and pipes offers
46% more power!



SINGLE SIDE FRAME



DOUBLE SIDE FRAME

The above options are only available for M-Range machines

SPREAD EVEN THE LARGEST, HARDEST BALES QUICKLY WITH MEGA



**BUILT FOR MAXIMUM
OUTPUT**

**CONFIGURED WITH
EVERY PRODUCTIVITY
UPGRADE**



Compatible with bale sizes up to:

6ft

**9 x 4 x 4ft
2.8 x 1.2 x 1.3M**

HD Motors handle high density and compacted bales with ease

High flow manifold improves performance and efficiency by 27% with larger, 3/4 inch pipes

Hardox wear plate offers increased durability

Galvanised body for extra rust protection

Truly self-loading from the stack or floor

No electrics, only one, double-acting two-way spool required and no low-pressure return line

Part of the M-Range, with a proven design of 25 years

LESS DUST, LESS NOISE

AN INNOVATE UK FUNDED INDEPENDENT ON-FARM TRIAL - 2025

This trial compared straw spreading using a Spread-a-Bale Maxi ST against a trailed turbine straw processor.

The findings show that Spread-a-Bale generates significantly less airborne dust and lower noise levels, helping to improve working conditions and animal welfare in livestock buildings.



LESS AIRBORNE DUST

Peak dust levels when spreading straw with Spread-a-Bale reached 3.7 milligrams per cubic metre (mg/m^3). The turbine processor reached just under $7\text{mg}/\text{m}^3$, which was at the upper limit of the dust sensor, meaning the true peak may have been higher.

This equates to the turbine processor producing around 89% more airborne dust than Spread-a-Bale in the same scenario.

DUST SETTLES FASTER

With Spread-a-Bale, dust settled more quickly after spreading. With the turbine processor, dust remained airborne for longer, increasing the potential exposure time in the shed.

QUIETER OPERATION

Spread-a-Bale recorded around 20% less noise than the turbine processor, supporting improved health and safety for farmers and helping to reduce the risk of animal disturbance.



Turbine Straw Processor



Spread-a-Bale



THE AVIAN DEFLECTOR



Compatible with 2VR machines.

THE AVIAN DEFLECTOR

The Avian Deflector is designed to enhance straw spread width whilst reducing bedding depth to provide a more even, thinner distribution over a wider area for the poultry sector - ideal for quick, consistent shed coverage,

Spread-a-Bale machines gently tease the bale apart and distribute it with minimum dust generation, helping maintain better air quality for the birds and farmers compared with more aggressive chopping/blowing systems.

Our machines also run quieter than high-velocity alternatives - reported at 20% less noise when compared to a turbine spreader. Bedding can be refreshed with minimal disturbance and stress.

BRACKETS

TELESCOPIC HANDLERS

BOBCAT TELEHANDLER

CATERPILLAR TH62

CATERPILLAR TH337 4073330

CATERPILLAR AG2000

CLAAS SCORPION

DIECI

JCB 3C/3CX

JCB COMPACT TOOLCARRIER

JCB Q-FIT

JCB TOOLCARRIER

JLG-DEUTZ

KRAMER

MF 8937/8926/8925 - WIDE

MANITOU

MATBRO PIN & CONE

MERLO STANDARD ZM2

MERLO ZM3

SCHAFFER

VOLVO

WIEDENMANN

TRACTOR LOADERS

3 POINT LINK

A FRAME

CHILTON

EURO 8

EUROHOOK

SKID STEER

QUICKE NO 3

TANCO

TRIMA



A man with glasses, wearing a dark jacket and khaki trousers, stands with his hands in his pockets next to a green and grey Spread-a-Bale machine. The machine has a 'ST' logo and 'Spread-a-Bale' branding. In the background, there is a large metal structure, possibly a shed or barn, and some trees under a clear sky.

WHY WE SWAPPED OUR CHOPPER BLOWER FOR A SPREAD- A-BALE SIDE THROW

TESTIMONIAL

From a Norfolk-based, 300 head pedigree Lincoln Red and commercial beef farmer

We traded our chopper blower for a Spread-a-Bale Midi Side Throw and we're over the moon with it – it is a fantastic bit of kit. The Side Throw was the key for us because our building openings are no more than about 8ft wide, so we needed a machine that would work neatly and safely in tight spaces.

30% STRAW SAVING & BEDDING THAT LASTS LONGER

Since changing to Spread-a-Bale, we estimate we're saving around 30% on straw compared to the chopper blower. We're also getting fluffier, better bedding because the straw isn't chopped, and it lasts longer. We used to bed down 3–4 times a week, but now we only need to twice a week, which makes a big difference to both cost and workload.

ANIMAL WELFARE & A HUGE REDUCTION IN DUST

Before we bought the Spread-a-Bale, our vet advised our livestock were showing definite signs of lung damage from the dust generated by the chopper blower. The dust was horrendous — we often had to put the cattle out while bedding down. With the Spread-a-Bale, we can bed down with minimal dust, so the cattle and the farmer can be in the shed during bedding down safely, without it becoming an unpleasant or risky job.

REMOVING THE WORRY OF STONES & FLYING DEBRIS

Stones were also a huge welfare concern with the old set-up and they even created holes all over our Yorkshire boarding. Since switching to Spread-a-Bale, we no longer have that worry, which is a big step forward for livestock safety and peace of mind.

SMOOTHER OPERATION, LOWER DIESEL USAGE & EXCELLENT VISIBILITY

One of the reasons we chose Spread-a-Bale is because it's simple to use, well-built and robust. The mechanism of feeding into the rotors is smooth and we don't have to rev the loader hard like we did with the chopper blower. This is kinder on the loader, helps save diesel, and makes bedding a calmer, more controlled job.

When we're spreading 120 x 90 bales, the operator experience really stands out — visibility is brilliant, which makes a big difference when you're trying to place straw accurately in tight buildings.

We also had a demonstration from another manufacturer. It had the same issues as our old set-up, particularly with a lack of visibility, albeit with slightly less dust, but the major issue was we would have had to fit £1,500 worth of kit per loader to make it compatible. With Spread-a-Bale, it was ready to go.

In short:

We'd highly recommend trying a Spread-a-Bale — it saves us time and straw, produces minimal dust, and poses less risk to both livestock and operator welfare.

- Will Mallon, Fransham Farm Company, Norfolk



Aled Vaughan, Pembrokeshire, farms a 450 cow pedigree Holstein herd in a family partnership

HOW SPREAD-A-BALE CUT BEDDING TIME FROM TWO HOURS TO 40 MINUTES, WHILST SAVING 25% STRAW.

This spring we traded in our Spread-a-Bale Midi for two new STs (Side Throws), one to work on each of the two units we farm in Pembrokeshire; it was a decision that says it all about the machine in terms of improving our efficiency.

We've 200 head of cattle housed 365 that require bedding up with straw every other day. Since deciding to go from manual to mechanising straw spreading with a Midi machine four years ago, we've been able to cut time taken to do the job on each farm from two hours to 40 minutes, while using 25% less straw and getting a much more even bed.

Seeking to save even more time and work more efficiently led us to investigate Spread-a-Bale's new ST which throws straw up to 9m to the left and to the right; it was a machine we considered to be much more suited to our sheds – we've narrow doors and passageways.

Both these ST machines are proving their worth; we're still spreading two bales on each farm every day however we've been able to halve the time it was taking on each unit from 40 minutes to just 20 minutes.

Spreads both round and rectangular bales ✓

Saves up to 75% labour and up to 50% straw ✓

20% longer straw for a deeper, fluffier bed ✓

Quick and simple to attach/detach ✓

Only one loader required ✓





Part of Spread-a-Bale's Range of World Class Bale Handling Solutions

Providing farmers with unique, efficient solutions for faster, easier feeding-out from bales.

Feed-a-Bale brings the Spread-a-Bale philosophy to feeding: simple, robust solutions that make the daily routine faster, cleaner and more cost-effective. Designed to work on the same versatile loader platforms, Feed-a-Bale lets you handle bales efficiently and deliver material exactly where it's needed—whether that's straight into a TMR mixer wagon or accurately along a feed passage. The range expands this year with the launch of Combi-Bale—our first dual-function machine that combines feeding forage with straw spreading. With a quick change in operation, Combi-Bale can chop and feed out haylage or silage, then switch back to rapid straw spreading for consistent, controlled bedding.

The range begins with the proven Feed-a-Bale Hood, a simple, lightweight add-on that turns your HR Spread-a-Bale into a fast, controlled feeding tool.

Straw isn't just for livestock - it's also an effective, low-input mulching material for crop and soil protection. Our Mulching Hood helps achieve the even, consistent coverage that successful mulching depends on. This wider capability is being highlighted through our collaboration with Groundswell, where Spread-a-Bale is supporting a no-till potato project using a uniform straw cover over newly planted tubers to reduce moisture loss, cut reliance on irrigation, remove herbicide requirements, and build soil organic matter over time. The same principle applies to other root crops such as carrots, and higher-value crops like strawberries—making mulching a practical, mechanised job with minimal labour.

FEED-A-BALE HOOD

Compatible with Spread-a-Bale HR Machines



MULCHING HOOD

Compatible with Spread-a-Bale HR & 2VR Machines



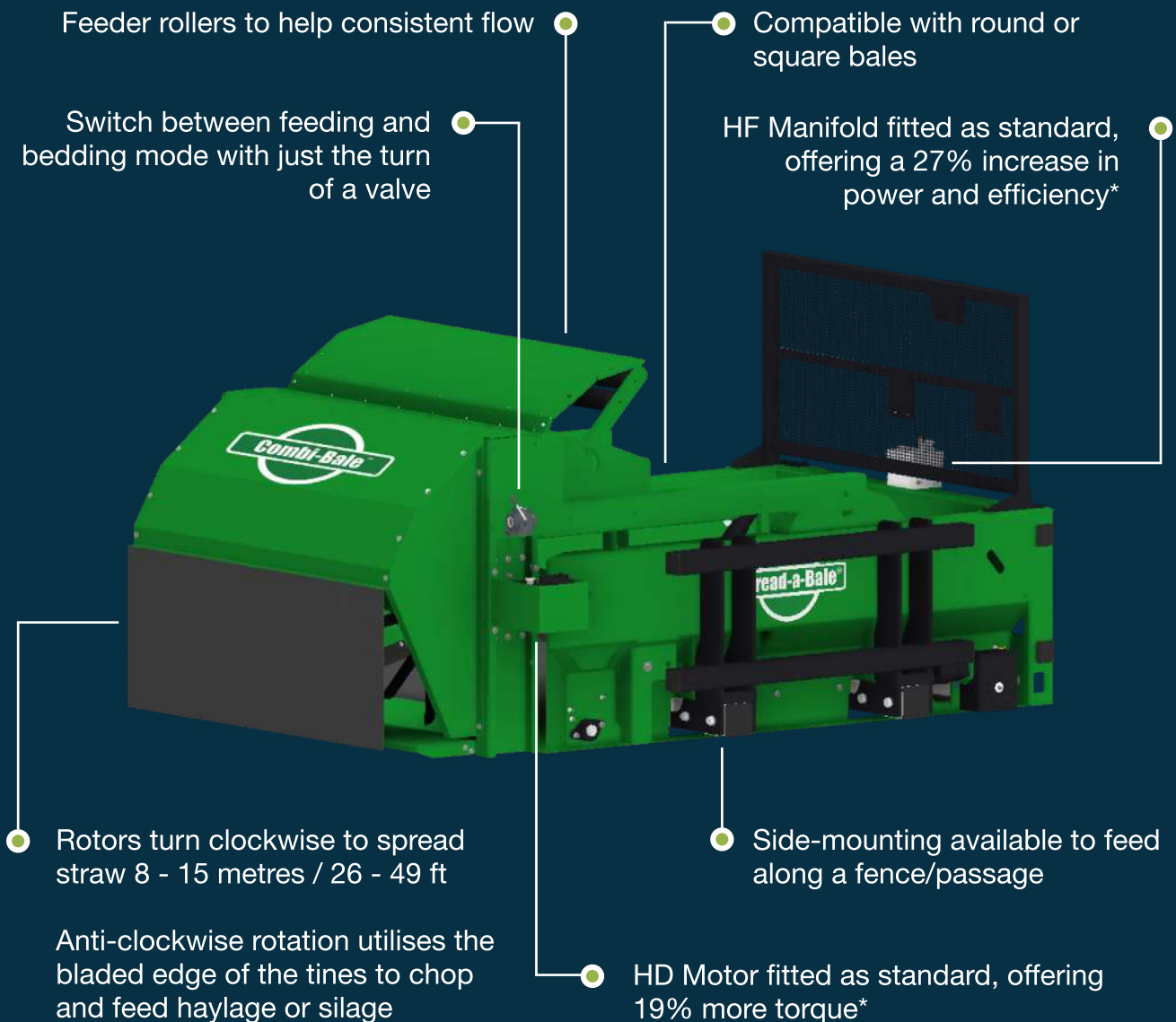

Groundswell



NEW

Looking to streamline operations without compromising performance or reliability?

By performing two essential jobs - feeding and bedding - Combi-Bale delivers unmatched versatility and value for money across livestock enterprises.



DUAL FUNCTION MACHINE TO FEED & BED

* compared to traditional M-Range Machines

TESTIMONIAL

“Spread-a-Bale’s Combi-Bale has been a fantastic addition to our feeding regime. The way it chops the round bale silage and leaves it fluffed up is much better for the ewes and the ewes’ lambs to get into. It’s much easier for them to eat rather than being in the bale. For the shy eaters, it is brilliant as they don’t have to spend so much time picking at the bale. The fact that it can be used to bed down with straw as well as feeding haylage is genius as it really is two machines in one!

It’s also incredibly user friendly and causes no disturbance to the animals—if anything, they know what’s happening and actually come towards the feeder while it’s in use. Switching between feeding and bedding is as simple as moving one lever, and we’ve noticed significantly less dust compared with using a chopper blower.”

*- Sam Jones, Brookhouse Farm,
Worcestershire*





Designed to enable farmers, contractors, and hay and straw merchants to reprocess conventional round and square bales into 20kg bales to meet with global demand from the expanding equine, smallholding and pet marketplace.



Optional Extras Available:

Additional elevator

Levelling rotor to aide even, consistent flow of material into baler

Debales and reprocesses approximately a bale a minute.

Perfect for use in conjunction with Spread-a-Bale's Horizontal Rotor M-Range Machine.

Features regulated bidirectional conveyor, powered from a tractor unit alongside the baler using a hydraulic spool valve.

Available in modular form providing the opportunity to grow the facility into a static plant.





SPECIFICATION TABLE

	NEW Lite-Range									NEW	
All measurements in metres or kilograms	MICRO-LITE			MINI-LITE			MIDI-LITE			COMBI- BALE	
	2VR	HR	ST	2VR	HR	ST	2VR	HR	ST		
STANDARD REAR MOUNTED											
Machine Width	1.735	1.785	1.735	1.735	1.785	1.735	1.735	1.785	1.735	1.780	
Machine Length	2.500	2.750	2.826	2.840	3.020	3.130	3.650	3.830	3.950	3.020	
Machine Head Height	1.216	1.180	1.216	1.216	1.180	1.216	1.216	1.180	1.216	1.180	
Bale Guard Height	1.150	1.150	1.150	1.150	1.150	1.150	1.150	1.150	1.150	1.150	
Machine Body Length	2.050	2.050	2.050	2.320	2.320	2.320	3.130	3.130	3.130	2.320	
Raised Head Height	2.830	2.850	2.800	2.450	2.750	2.750	2.700	2.700	2.700	2.850	
Max. Bale Width	1.200	1.200	1.200	1.200	1.200	1.200	1.200	1.200	1.200	1.200	
Max. Bale Length	1.500	1.500	1.500	1.800	1.785	1.750	2.500	2.485	2.450	1.785	
Max. Bale Height	1.000	1.300	1.300	1.000	1.300	1.000	1.000	1.300	1.000	1.300	
Max. Bale Diameter	1.500	1.500	1.500	1.600	1.600	1.600	1.600	1.600	1.600	1.600	
Machine Weight	634	684	824	670	720	860	730	780	920	840	
Max. Bale Weight	300	300	176	300	300	300	500	500	500	500	
Machine + Bale Weight	934	984	1,000	970	1,020	1,160	1,230	1,280	1,420	1,340	
Min. Loader Lift Capacity	1,000	1,000	1,000	1,200	1,200	1,200	1,500	1,500	1,500	1,750	
SINGLE SIDE MOUNTED											
Machine Width	2.570	2.750	NA	2.840	3.020	NA	3.650	3.830	NA	3.020	
Machine Length	1.735	1.785	NA	1.735	1.785	NA	1.735	1.785	NA	1.780	
Machine Weight	776	826	NA	812	862	NA	872	922	NA	1,140	
Max. Bale Weight	250	250	NA	300	300	NA	500	500	NA	500	
Machine+ Bale Weight	1,026	1,076	NA	1,112	1,162	NA	1,370	1,422	NA	1,640	



	M-Range														
	MINI			SUPER MINI		MIDI			MIDI XL			MAXI		MAXI XL	
	2VR	HR	ST	2VR	ST	2VR	HR	ST	2VR	HR	ST	2VR	ST	2VR	ST
	1.735	1.780	1.735	1.735	1.735	1.735	1.780	1.735	1.735	1.780	1.735	1.735	1.735	1.735	1.735
	2.840	3.020	3.130	2.750	3.130	3.650	3.830	3.950	3.950	4.130	4.250	3.650	3.980	3.950	4.250
	1.150	1.180	1.155	1.495	1.495	1.150	1.180	1.155	1.150	1.180	1.155	1.495	1.495	1.495	1.495
	1.150	1.150	1.150	1.465	1.495	1.150	1.150	1.150	1.150	1.150	1.150	1.465	1.495	1.465	1.495
	2.320	2.320	2.320	2.320	2.480	3.130	3.130	3.130	3.430	3.430	3.430	3.130	3.130	3.430	3.430
	2.480	2.850	2.830	2.800	2.900	2.480	2.850	2.830	2.480	2.830	2.830	2.800	2.900	2.800	2.900
	1.200	1.200	1.200	1.200	1.200	1.200	1.200	1.200	1.200	1.200	1.200	1.200	1.200	1.200	1.200
	1.800	1.785	1.750	1.800	1.750	2.500	2.485	2.450	2.800	2.800	2.800	2.500	2.450	2.800	2.800
	1.000	1.300	1.000	1.300	1.300	1.000	1.300	1.000	1.000	1.300	1.000	1.300	1.300	1.300	1.300
	1.600	1.600	1.600	1.800	1.800	1.600	1.600	1.600	1.600	1.600	1.600	1.800	1.800	1.800	1.800
	880	840	885	990	1,007	1,010	950	975	1,090	1,030	1,090	1,090	1,094	1,180	1,150
	500	500	500	500	500	600	600	600	600	600	600	600	600	600	600
	1,380	1,340	1,385	1,490	1,507	1,610	1,550	1,575	1,690	1,630	1,690	1,690	1,694	1,780	1,750
	1,750	1,750	1,750	2,000	2,000	2,500	2,500	2,500	3,000	3,000	3,000	3,000	3,000	3,500	3,250
	2.840	3.020	NA	2.840	NA	3.650	3.830	NA	3.950	4.130	NA	3.650	NA	3.950	NA
	1.900	1.900	NA	1.900	NA	1.900	1.900	NA	1.900	1.900	NA	1.900	NA	1.900	NA
	1,180	1,140	NA	1,290	NA	1,310	1,250	NA	1,390	1,350	NA	1,390	NA	1,480	NA
	500	500	NA	500	NA	600	600	NA	600	600	NA	600	NA	600	NA
	1,680	1,640	NA	1,790	NA	1,910	1,850	NA	1,990	1,950	NA	1,990	NA	2,080	NA



ATTACH



LOAD



DETWINE



SPREAD

Spread-a-Bale Ltd

Sixth Avenue, Deeside Industrial Park, Deeside, CH5 2LB

Telephone: 01244 394 258

sales@spread-a-bale.com

www.spread-a-bale.com



All Spread-a-Bale machines have EU and PCT patent protection.
Spread-a-Bale and Feed-a-Bale are registered trademarks of Spread-a-Bale Ltd.

Commodity Code 8433 5985